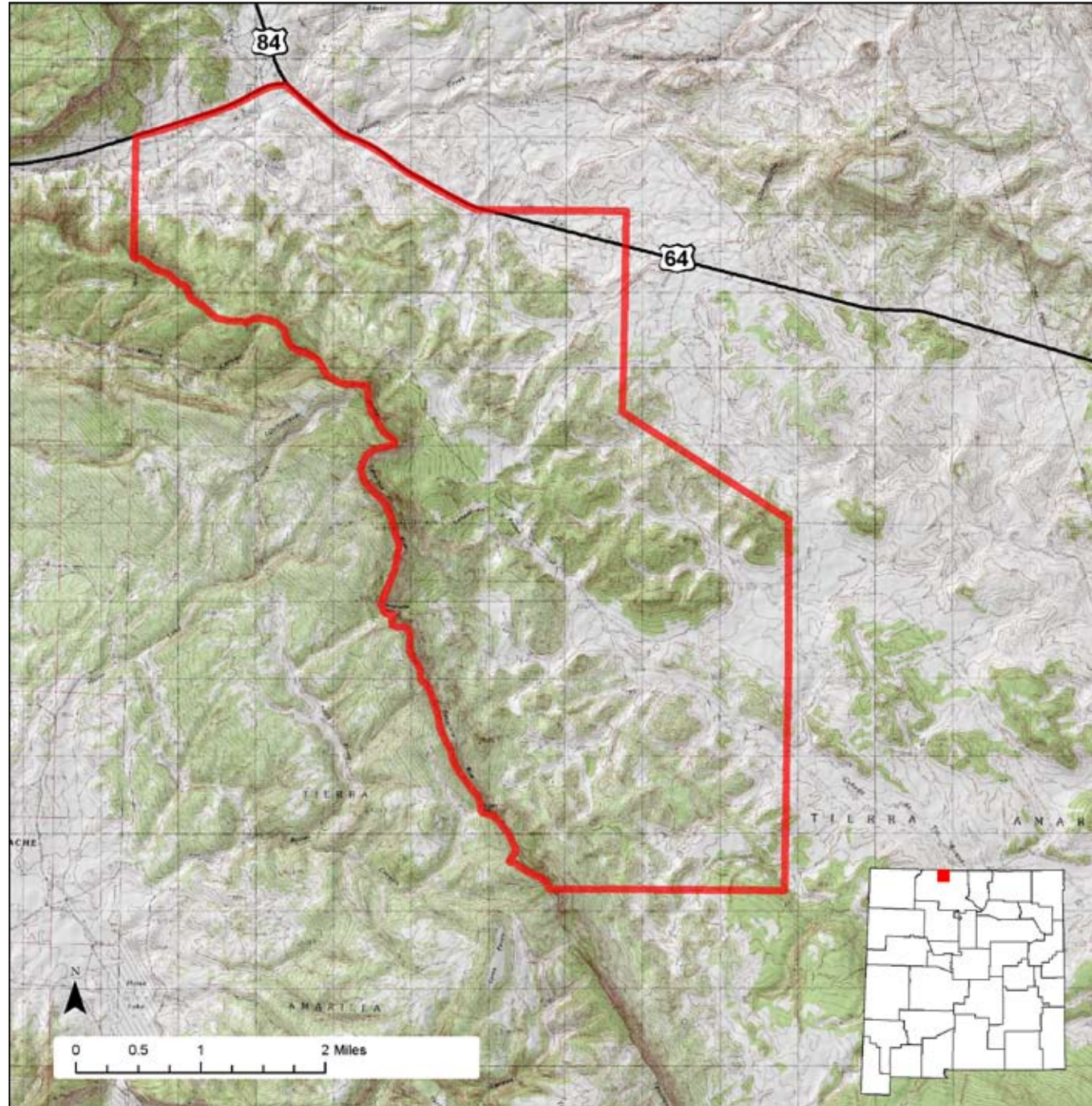




# Bill Humphries Wildlife Area



**Location:** Bill Humphries Wildlife Area is located about 10 miles west of Chama south of Highway 64/84.

**Total Acreage:** 10,950 acres.

**Purchase:** Purchases for the Bill Humphries Wildlife Area began in 1966 to provide wildlife habitat and public access to big game hunting.

**Description:** The Bill Humphries straddles the Continental Divide in northern New Mexico. It contains a mixture of pinon, juniper and mixed conifers as well as grasses and forbs.

**For More information:** More information about hunting, fishing and other activities, may be found on the Department's website: [www.wildlife.state.nm.us/](http://www.wildlife.state.nm.us/).

GAIN Activities	What to See, Do, and Learn
<ul style="list-style-type: none"> <li>✓ Wildlife Viewing</li> <li>✓ Photographing</li> </ul> <p style="text-align: center;"><b>Access</b></p>	<p><b>Wildlife Viewing</b>-Wildlife watchers may see deer, elk, turkey, and other wildlife. Access is allowed Memorial Day weekend-November 15 except during established deer and elk hunts. Good binoculars are important. The best time to view wildlife is at dawn or dusk.</p>
<ul style="list-style-type: none"> <li>✓ Hiking</li> <li>✓ Bicycling</li> <li>✓ Horseback Riding</li> </ul> <p style="text-align: center;"><b>Hunting and Fishing</b></p>	<p><b>Photographing</b>-The best time to photograph wildlife is at dawn or dusk. A telephoto lens is important.</p> <p><b>Hiking</b>-Hiking is the best way to see wildlife at the Bill Humphries Wildlife Area or other wildlife management areas. Access is allowed Memorial Day weekend-November 15 except during established deer and elk hunts.</p>
<ul style="list-style-type: none"> <li>✓ Hunting</li> <li>✓ No fishing opportunities</li> </ul> <p style="text-align: center;"><b>Closures</b></p>	<p><b>Bicycling</b>-Allowed only on established roads.</p> <p><b>Horseback Riding</b>-Horseback riding is allowed Memorial Day weekend-November 15 except during established deer and elk hunts. Licensed hunters may ride during their hunts.</p>
<ul style="list-style-type: none"> <li>✓ Yes</li> </ul> <p style="text-align: center;"><b>Facilities</b></p>	<p><b>Camping</b>-Primitive camping is allowed Memorial Day weekend-November 15 in designated areas only. Licensed hunters may camp during their hunt.</p>
<ul style="list-style-type: none"> <li>✓ No rest rooms</li> <li>✓ Primitive camping</li> <li>✓ No drinking water</li> </ul> <p style="text-align: center;"><b>Fees</b></p>	<p><b>Hunting</b>-Hunting is allowed by licensed and permitted hunters for deer, elk, bear, turkey, and small game.</p> <p><b>Fishing</b>-No fishing opportunities.</p>
<ul style="list-style-type: none"> <li>✓ Yes</li> </ul> <p style="text-align: center;"><b>Motorized Vehicles</b></p>	<p><b>Closures</b>-Bill Humphries Wildlife Area is closed November 16 until Memorial Day weekend except for established deer and elk hunts.</p> <p><b>Facilities</b>-Bill Humphries Wildlife Area does not have rest rooms, developed camp sites, or drinking water.</p>
<ul style="list-style-type: none"> <li>✓ Not allowed beyond the roadway and parking area</li> </ul> <div style="border: 1px solid black; padding: 5px; margin-top: 10px;"> <p><b>For more information on hunting and fishing rules and seasons, please read current hunting or fishing Rules and Information Booklets available on the Department's website, at Department offices, or from license vendors state-wide.</b></p> </div>	<p><b>Fees</b>-Hunters must have appropriate licenses and permits. Wildlife viewers, photographers, hikers, bicyclists, and horseback riders must have a current GAIN Permit and a Habitat Management and Access Validation.</p> <p><b>Motorized Vehicles</b>-Not allowed beyond the roadway and parking area.</p>